



# OWT OrbitalWelding

銲管機 · 開放式銲把 · 封閉式銲把 · 管對管板銲把

軌道式切管機 · 管端修平機 · 管端倒角機

臺灣總代理



聯祥企業股份有限公司

北部：桃園市平鎮區平鎮工業區工業二路 8 號 Tel : 03 469 6600 Fax : 03 469 6969

南部：高雄市三民區撫順街 46 號 Tel : 07 311 1771 Fax : 07 322 4640



Cutting saw OrbiCut130  
切管機 Orbitalcut130  
OD 4-130mm 230V



Cutting saw OrbiCut230  
切管機 Orbitalcut230  
OD 60-230mm  
選配 OD 19-230mm 230V



Cutting saw OrbiCut520  
切管機 Orbitalcut520  
OD 139.7-520mm 230V



Support feet OrbiCut130/230  
OrbiCut130/230 支撐腳架



Cutting saw table for OrbiCut 520  
OrbiCut 520 切割桌



Saw blade Ø 68 mm wall thickness 1 - 3 mm  
鋸片 Ø 68 mm 管厚 1-3mm  
Saw blade Ø 68 mm wall thickness 2,5 - 7 mm  
鋸片 Ø 68 mm 管厚 2.5-7mm



Saw blade Ø 80 mm Wall thickness 1 - 3 mm  
鋸片 Ø 80 mm 管厚 1-3mm  
Saw blade Ø 80 mm Wall thickness 2,5 - 7 mm  
鋸片 Ø 80 mm 管厚 2.5-7mm



Saw and chamfer blade 30°  
開槽鋸片 30°



Cutting blocks No. 19  
切割工具 No.19



Cutting blocks, Quick Lock System  
切割工具 快速鎖定系統



Tube squaring System OrbiPlan115  
AD 3 -114,3 mm  
(0,118-4,5 inch) 230 V  
管端加工機 OrbiPlan 115  
OD 3 - 114.3mm 230V



Tube squaring System OrbiPlan38  
AD 3 - 38,1 mm  
(0,118-1 1/2 inch) with battery pack  
管端加工機 OrbiPlan 38  
OD 3 - 38.1mm 附電池組



Tube squaring System OrbiPlan38  
AD 3 -38,1 mm  
(0,118-1 1/2 inch) 230 V  
管端加工機 OrbiPlan 38  
OD 3 - 38.1mm 230V



Beveling machine Typ MF3iw with electric motor  
Scope of application from 25 mm - 114,5 mm  
管端倒角機 MF3iw 含電動馬達  
適用範圍 ID 25mm ID-114.5MM AD



Beveling machine Typ MF3i with electric motor  
Scope of application from 40 mm - 160 mm  
管端倒角機 MF3i 含電動馬達  
適用範圍 ID 40mm ID-160mm AD

## Orbital S7 Compact MV



## Orbital Controller S7 Touch Comfort



- 7 inch colour touch screen display integrated in a plastic case with a cable length of 10m
- Simple operator guidance by means of symbols (input of the outer diameter of the tube, wall thickness and choice of welding tool)
- Monitoring of gas and water cooling
- Tacking mode included
- Division of the welding parameters into up to 12 levels
- Automatic calculation – continuous or in step mode , according to the tube dimension and wall thickness
- Modification of the parameters by the current-percentage key
- The parameters current intensity and wire feed can be changed during the welding process by panel
- Circular display of the welding process
- Immediate documentation of the welding parameters in a PDF document
- Any necessary additional information for a detailed documentation can be entered directly by means of the panel
- Unlimited storage of welding programmes
- Storage of target and actual parameters in a PDF document on USB
- The welding programmes are saved by codification
- Software updates possible
- Monitoring of welding parameters
- Connection facility for oxygen analysers
- Servo PC board for wire feed
- External DIN A4 printers can be connected
- External dimensions of the basic case (L x W x H)600 x 210 x 340mm,weight 5kg
- External dimensions of the operation panel (L x W x H)260 x 228 x 80mm,weight 1.5kg
- Multi-range 85-264volt
- AVC upgrade kit

- 7 吋彩色觸控螢幕附 10m 纜線
- 直覺式操作控制器 (內建參數、輸入管壁外徑、厚度和選擇鐸把)
- 水冷、氣冷監控
- 點鐸模式
- 單個鐸道最多可拆成 12 組參數
- 輸入直徑與厚度 · 自動計算鐸接參數
- 透過百分比調整電流值
- 鐸接途中可以透過操作面板修改電流和送線速度
- 用圓形圖示顯示鐸接過程
- 鐸接數據可轉存為 PDF 檔
- 針對儲存的參數可追加附註
- 鐸接參數的儲存空間無限制
- 參數可用 USB 存取
- 鐸接程序按照編號儲存
- 軟體可升級
- 監控鐸接數據
- 可連接含氧分析儀
- 送線機擁有伺服等級主機板
- 可連接外部 A4 印表機
- 本體尺寸(長 x 寬 x 高)600 x 210 x 340mm, 重量 5 公斤
- 控制器尺寸(長 x 寬 x 高)260 x 228 x 80mm, 重量 1.5 公斤
- 入力電壓 85-264V
- 可選配 AVC 組件



## 轉盤

Turntable OrbiTurn



## AVC/擺弧套件

AVC/OSC Kit Orbitum  
Motorized arc voltage control (AVC) and torch oscillation (OSC)



## 送線機

OrbiWirefeed 15  
for 5-15kg spools



## 管對管板鐸接頭

Tube to tubesheet  
weld head TSH20  
(10-78mm)



## 管對管板鐸接頭

Tube to tubesheet  
weld head TSH16  
(10-80mm)



## 管對管板鐸接頭

Tube to tubesheet  
weld head TSH120  
(3-40 mm)



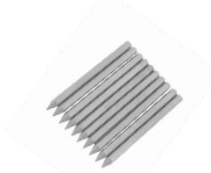
## 心軸

Mandrel



## 中心定位軸

Centuring spindle



## 鐸棒

Tungsten electrode  
OrbiPlus



## 鐸棒研磨機

Tungsten electrode  
Grinder (230v)  
Model WIG 10/175



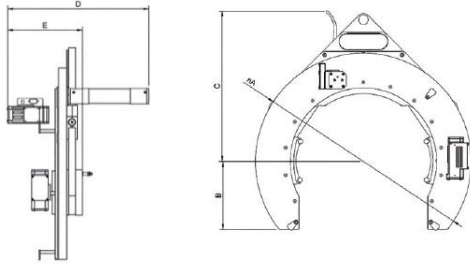
## 鐸棒研磨機或電池組附鑽石研磨片

OrbiGrinder tungsten  
electrode grinder 230 V or  
battery pack  
with diamond grinding disk

## 開放式鐳把/軌道式鐳接頭 AVC/OSC Open-Frame weld head OHW AVC/OSC-Series



- 中、厚管壁多道鐳的電動電弧電壓控制(AVC)和擺弧裝置(OSC)
- motorized arc voltage control (AVC) and torch oscillation (OSC) for multipass welding of medium and thick walled pipes



Schweißzange/ Weld head	n A	B	C	D	E
OHW115 AVC/OSC	300	88	230	356	118
OHW170 AVC/OSC	390	177	318	364	139
OHW330 AVC/OSC	560	176	389	376	199

## 封閉式鐳把

### Enclosed weld heads CHW Series



## 微型封閉式鐳把

### Enclosed weld heads CHW 13 Micro



## 開放式鐳把/軌道式鐳接頭 Open-Frame weld head OHW Series

- OHW 開放式鐳把緊湊的機身專為小空間所設計
- 強壯耐用的結構
- 無段調整的夾持機構
- 鐳槍可快速置中並由夾爪固定
- 精準保持電弧高度
- 具備啟動/停止感應器·無須手持遙控器
- 選配: 90 度馬達轉接座
- 選配: 送線機



The OHW open-frame weld heads are characterized by their very narrow grip system

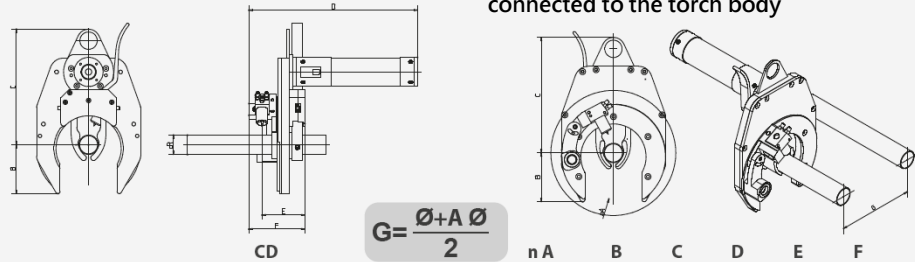
Robust construction

Continuously variable grip mechanism  
The weld heads can be easily centred on the tube and are clamped by means of a gripping lever

The arc length is kept mechanically at a constant distance

Due to the integrated start/stop sensor no additional remote control is needed  
90° tilting torch bracket option available

An additional wire console can be connected to the torch body



	CD	n A	B	C	D	E	F
OHW Special	10-51 mm/0.394"-2.008"	108/144	31	155	326	120	134
OHW 80	10-76,2 mm/0.394"-3"	150/220	61	173	270	59	82
OHW 115	20-114,3 mm/0.787"-4 1/2"	230/280	88	230	270	59	82
OHW 170	40-168,3 mm/1.575"-6.626"	290/320	130	318	270	59	82
OHW 325	168,3-323,9 mm/6.61"-12 3/4"	450	225	450	135	120	135
OHW 330	168,3-330 mm/6,61"-12,992"	540	185	390	295	100	115



水冷 TIG 槍 OHW Special 附 8.5m 纜線

Water-cooled TIG-torch OHW Special with 8.5m cable

氣冷 TIG 槍 附 10.5m 纜線

Gas-Cooled TIG torch with 10.5m cable

水冷 TIG 槍 OHW 附 8.5m 纜線

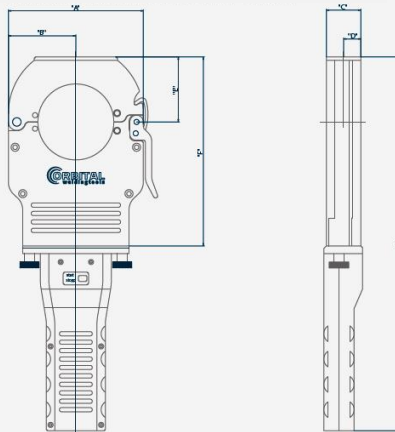
Water-Cooled TIG torch OHW with 8.5m cable

氣冷鐳把 CHW G 和 CHW G/W

Gas-cooled Weld heads CHW G and CHW G/W

水冷鐳把 CHW W

Water-cooled weld heads CHW W



Schweißzange/ Weld head	DA/ CD	A	B	C	D	E	F	G
CHW 21 G/W	3,17-21,3 mm/1/8"-0.839"	70	35	35	17	37	147	366
CHW 38 G/W	3,17-38,1 mm/1/8"-1 1/2"	100	51	35	17	51	173	392
CHW 76 G/W	6,0-76,2 mm/1/4"-3"	160	80	42	20	77	224	443
CHW 115 G/W	6,0-114,3 mm/1/4"-4 1/2"	200	100	42	20	97	264	483
CHW13 G	3,17-12,7 mm/1/8"-1/2"	64	32	12	6	22	103,3	277,5